



PRO AIR 60 AERATION COMPRESSOR

**Pro Air 60 Aeration
Compressor**

Item #61016



aquascapeinc.com



Thank you for choosing the Aquascape Pro Air 60 Aeration Compressor. At Aquascape, we connect people to water the way nature intended. Since 1991, we've been creating and field-testing water features in order to provide you with the most reliable products and best value in the water gardening industry.



Pro Air 60 Aeration Compressor

The Aquascape Pro Air 60 Aeration Compressor is the ideal compressor for aerating ponds and water features up to 60,000 Litres. The unit can be combined with aeration tubing and one or two aeration diffusers to supply dissolved oxygen directly to pond water, helping all biological processes and ensuring healthier water, fish, and plants. This instruction manual will guide you through the proper use and recommended maintenance procedures to ensure long-term effectiveness.

Contents	
No.	Description
1.	Pro Air 60 Aeration Compressor
2.	2-Way Aeration Compressor Manifold
3.	3/8" Barbed Outlet

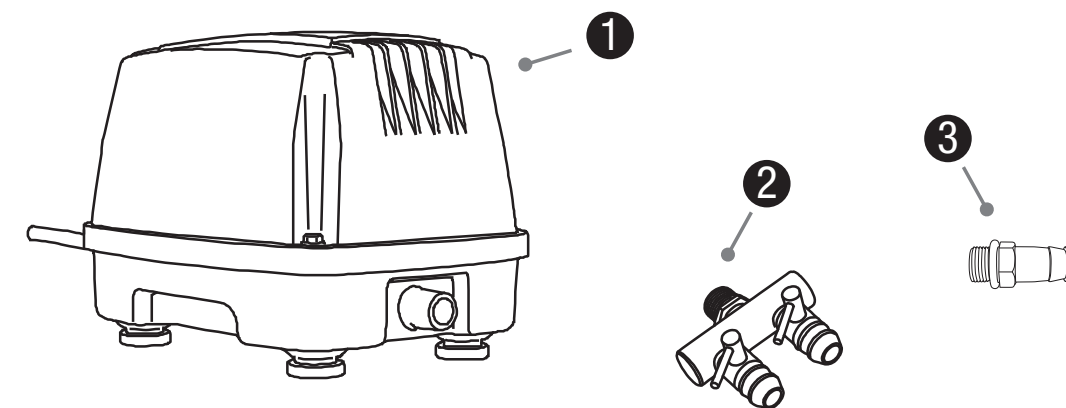


TABLE OF CONTENTS

- Introduction 2
- Contents 3
- Recommended Products 3
- Specifications Chart 3
- Instructions 4
- Winter Application 5
- General Maintenance 5
- Troubleshooting 5
- Replacement Parts 5
- Warranty Information 6

Contact Us

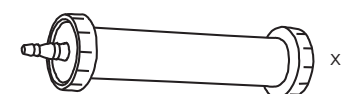
For more information about our company or products, please visit our website at aquascapeinc.com or call US (866) 877-6637 CAN (866) 766-3426.

Find us on:



facebook.com/aquascapeinc
youtube.com/aquascape4
pinterest.com/aquascapeinc
instagram.com/aquascape_inc

Recommended Products



10" Rubber Membrane Aeration Diffuser (#61010) x 2



Weighted Aeration Tubing 3/8" x 100' (#61014)



Pro Air Check Valve (#61003) x 2



Hose Clamps (#99107) x 4

Pro Air 60 Aeration Compressor Specs

Voltage/Frequency	Wattage	Max Air Flow Rate (loaded)	Max Air Depth	Max Recommended Pond Depth	Max Recommended Pond Volume	Outlet Fitting	Dimensions
230V/50 Hz	45-Watts	2.1 CFM (60 liters/min)	5.08 psi (0.36 kgf/cm ²)	3.5m'	60,000 Litres	3/8"	23.5 x 16.51 x 16.51cm

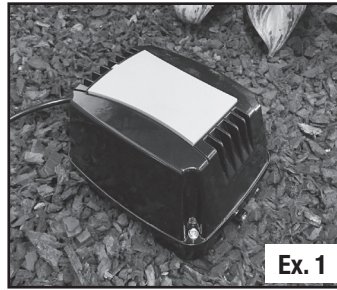
Instructions

STEP 1

SET COMPRESSOR

- Set the compressor in a location near a Residual Current Device (RCD) rated receptacle (Ex. 1).

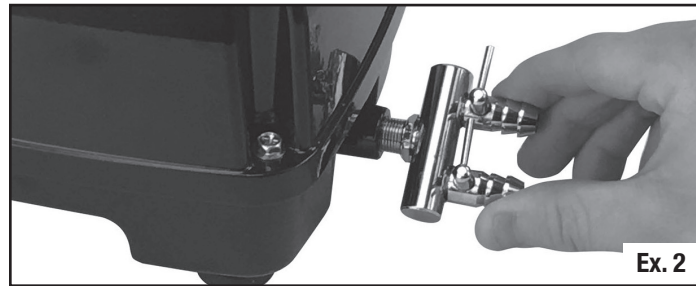
NOTE: Do not submerge the compressor in water. We recommend placing it in a location above the pond's water level, whenever possible, to prevent water from entering the compressor.



STEP 2

THREAD MANIFOLD

- Thread the 2-way manifold into the discharge of the compressor (Ex. 2). The 2-way manifold provides the option of installing up to two separate airlines with the added benefit of airflow valve controls.

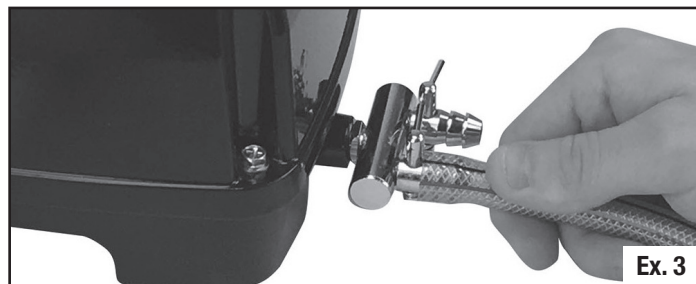


STEP 3

ATTACH TUBING TO MANIFOLD

- Attach tubing with airline check valves to each manifold outlet (Ex. 3). It is recommended to use hose clamps to secure the tubing to the manifold outlet. If installing only one airline, close the unused valve before use.

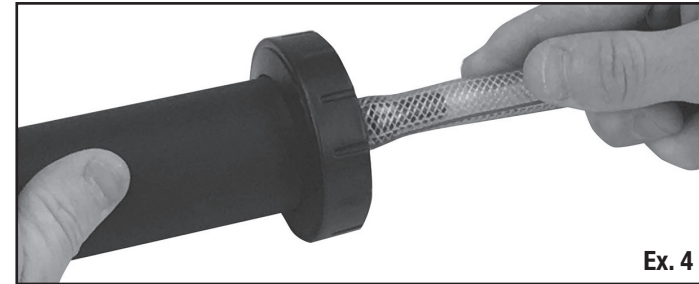
NOTE: Installing check valves will prevent water from siphoning back through the tubing and entering the compressor. Failure to properly install check valves may result in the compressor being permanently damaged, voiding the warranty.



STEP 4

ATTACH TUBING TO DIFFUSERS

- Attach the other end of the tubing to the diffuser(s) (Ex. 4). It is recommended to use hose clamps to secure the tubing onto each diffuser.



STEP 5

SET DIFFUSERS IN POND

- Set the diffuser(s) in the pond (Ex. 5).



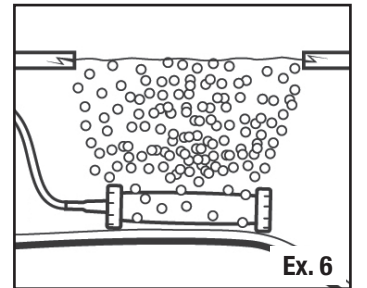
STEP 6

PLUG IN COMPRESSOR

- Plug the compressor into a Residual Current Device (RCD) rated receptacle and enjoy the benefits!

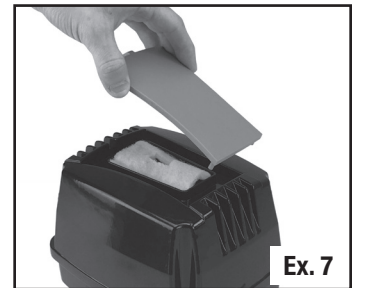
Winter Application

- The aeration compressor can be used during winter months where bubbles and water movement created at the surface help to maintain a small opening in the ice for oxygenation (Ex. 6). DO NOT place diffusers on the bottom of the pond during winter, as it may disrupt the natural thermocline found in the deeper portions of the pond where the fish are overwintering. Place the diffuser about 30cm to 45cm below the surface of the water.



General Maintenance

- The inlet sponge filter should be checked annually or if the compressor makes any abnormal noises. If operating the unit in dusty conditions, you will need to check it more frequently. The filter is easily inspected by gently popping off the top plastic compressor cover (Ex. 7). The sponge filter and lid can be rinsed in clean water and thoroughly dried before replacing.
- The compressor components can be completely replaced, as needed, to maximize functionality. Use the Pro Air Inlet Sponge Filters (#61005) and Pro Air 60 Replacement Diaphragm (#61007) to refresh the compressor.
- Winter care: the Pro Air 60 Aeration Compressor can be operated through freezing winters. If not running the compressor through the winter, it is recommended to cover the compressor or store it in a frost-free location.

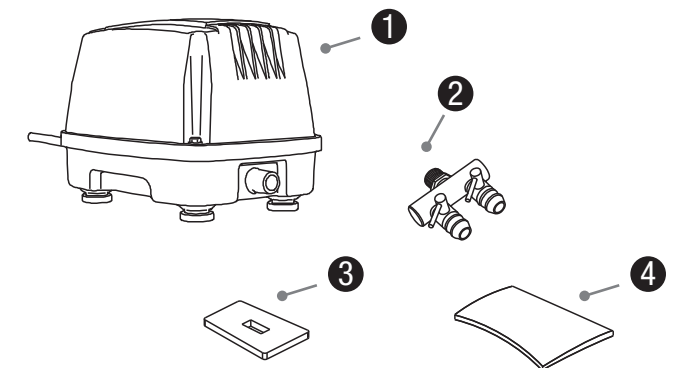


Troubleshooting

- Reduced or no air flow
 - Make sure the check valve is oriented in the proper open direction by verifying that air is able to flow freely through the tubing toward the diffuser
 - Make sure tubing is not kinked or restricted
 - Should a kinked tube or dirty membrane significantly block air flow, shut down the compressor immediately to prevent overheating
 - Check the air inlet sponge filter for clogging and clean or replace if necessary
- Compressor not working
 - The RCD may have tripped
 - The compressor is not receiving the correct voltage

Replacement Parts

Pro Air 60 Aeration Compressor Replacement Parts	
No.	Item number/description
1.	61016 – Pro Air 60 Aeration Compressor
2.	61012 – 2-Way Aeration Compressor Manifold
3.	61005 – (3) Pro Air 60 Air Inlet Sponge Filters
4.	61004 – Pro Air 60 Compressor Lid
5.	61007 – Pro Air 60 Replacement Diaphragm (not pictured)



Warranty Information

3 YEAR WARRANTY

Aquascape warrants that the Pro Air 60 Aeration Compressor will be free of manufacturing defects for three years from date of purchase. Proof of purchase required. Warranty does not cover damage resulting from electrical supply problems, lightning, negligent handling, misuse or lack of reasonable maintenance or care. Warranty does not cover parts subject to normal wear, such as air diaphragm cartridges, aeration discs and diffusers. Aerators should only be operated in freshwater conditions without corrosive chemicals like chlorine or bromine. If upon Aquascape's inspection, the compressor shows evidence of a manufacturing defect, Aquascape's liability is limited, at Aquascape's option, to the repair of the defect, replacement of the defective product, or refund of the original purchase price. The warranty excludes costs of labor, removal of product, shipping and expenses related to the installation and re-installation of the product. No liability for loss or damage of any nature or kind, whether arising out of or from the use of the product, whether defective or not defective, is assumed by Aquascape, Inc. or its affiliates. Aquascape shall not be liable for any incidental, consequential or other damages arising under any theory of law whatsoever.

For more information about our company or products, please visit our website at aquascapeinc.com
or call us at US (866) 877-6637 CAN (866) 766-3426